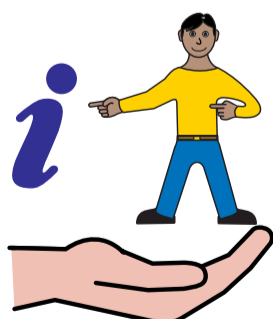


# The Accessible Information Standard is here.

This applies to all NHS and adult social care organisations.

The **Accessible Information Standard** is a new law to make sure that people who have a disability, impairment or sensory loss are given information they can easily read or understand.

The **Accessible Information Standard** tells NHS and adult social care organisations they must make sure people get information in different formats such as:



Please tell a member of reception if you have any communication support needs. You can help us make sure we get things right for you



You can find more information about the **Accessible Information Standard** on the NHS England website:

[www.england.nhs.uk/accessibleinfo](http://www.england.nhs.uk/accessibleinfo)